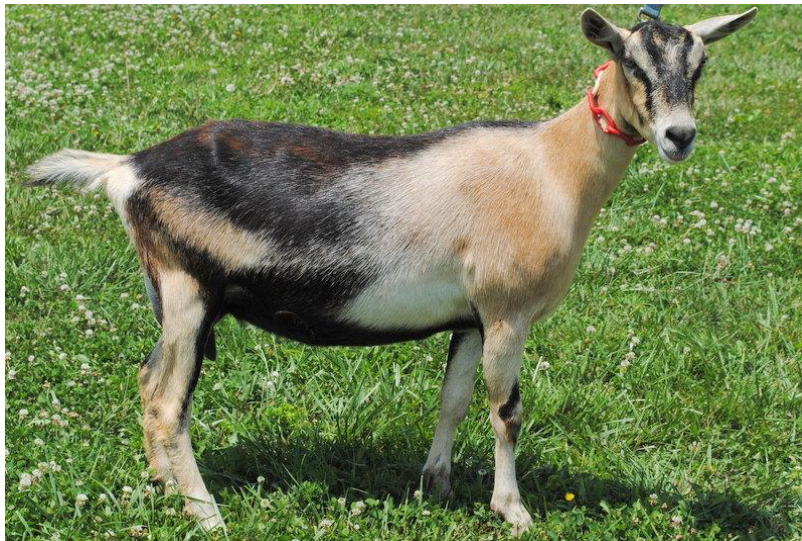


# Question 1



What breed of goat is this?

- A. Toggenburg
- B. Nubian

- C. Saanen
- D. Alpine



## Question 2



What breed of goat is this?

- A. Spanish
- B. Kiko

- C. Boer
- D. Savanna



# Question 3



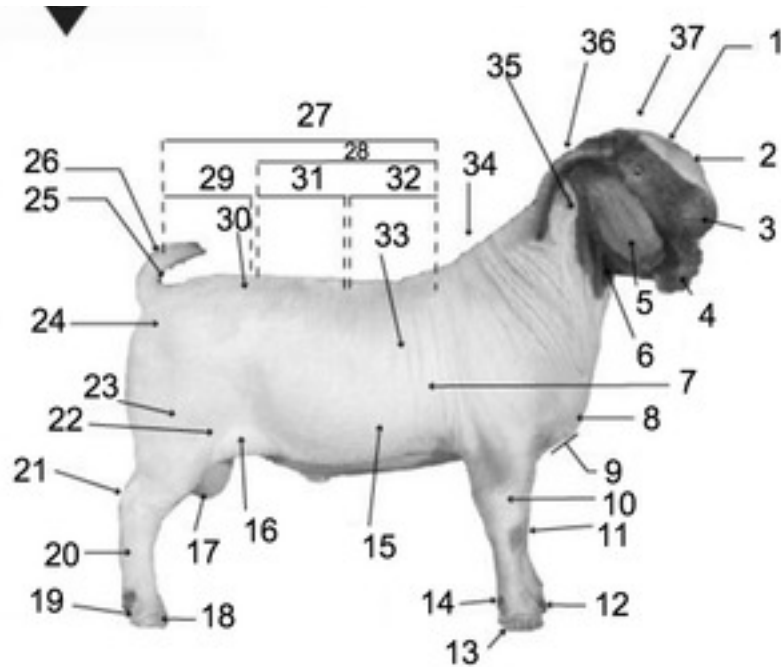
What cut of meat is this?

- A. Leg
- B. Chop

- C. Brisket
- D. Loin



# Question 4

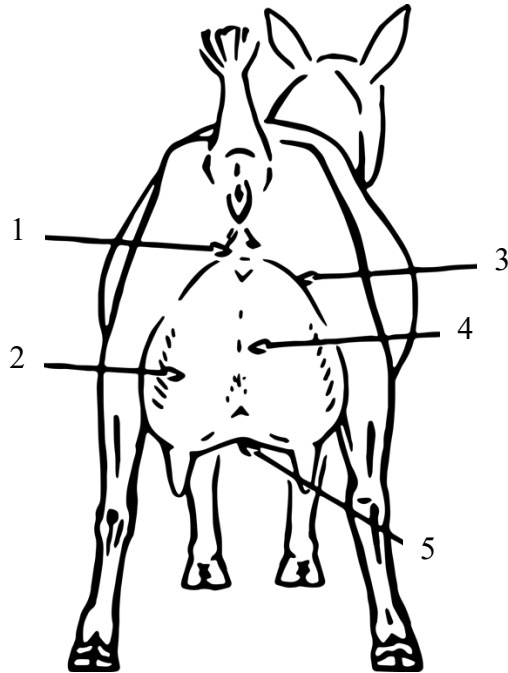


What part of the goat is #19?

- A. Stifle
- B. Pastern
- C. Cannon Bone
- D. Hock



# Question 5



What part of the goat is #2?

A. Udder

B. Fore Udder

C. Rear Udder

D. Udder Floor



# Question 6



What is an intact male goat called?

- A. Boar
- B. Buck

- C. Bull
- D. Ram



# Question 7



What is the normal temperature range for a goat?

- A. 98.5 - 101
- B. 101.5-103.5

- C. 105-107.5
- D. 97.9-98



# Question 8



What state produces the most meat goats?

- A. Texas
- B. Oklahoma
- C. Kentucky
- D. Arizona





# Question 9



What is the gestation period for a pregnant doe?

- A. 114-124
- B. 145-155

- C. 270-280
- D. 300-310



# Question 10



How many teats should a dairy goat have to be considered show correct?

- A. 1
- B. 2

- C. 3
- D. 4



# Question 11



What is the official  
USDA identification  
for goats?

- A. RFID
- B. NUES

- C. Scrapie
- D. EFID



# Question 12



What kind of digestive system does a goat have?

- A. Ruminant
- B. Monogastric

- C. Pseudo-Ruminant
- D. Avian



# Question 13



What is a baby goat called?

- A. Calf
- B. Kit

- C. Kid
- D. Pup



# Question 14



What is a cashmere goat known for producing?

- A. Kids
- B. Milk

- C. Meat
- D. Fiber



# Question 15



How much mohair can an Angora goat produce in a year?

- A. 2-4 pounds
- B. 5-7 pounds

- C. 8-16 pounds
- D. 17-20 pounds



# Question 16



What is this tool called?

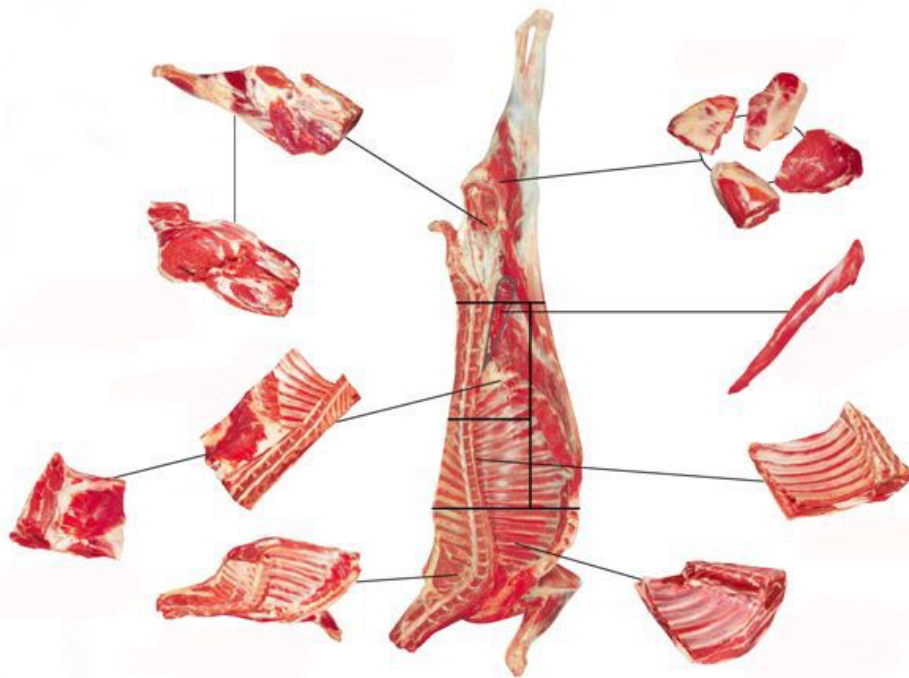
- A. Bolus Gun
- B. Dehorner

- C. Elasticator
- D. Drench Gun





# Question 17



What is the average dressing percentage for a market goat?

- A. 40% - 50%
- B. 35% - 45%

- C. 45% - 55%
- D. 50% - 60%



# Question 18

What is the main ingredient in the feed?

- A. Molasses
- B. Oats
- C. Soybeans Hulls
- D. Rolled Corn



## EXCALIBUR II PELLET W/RUM MEDICATED #3006

**Complete pelleted feed to be used as an initial creep feed and starter for goats from birth to six months, as well as a developer for maximizing the genetic potential of the show buck and doe.**

For the prevention of coccidiosis caused by Eimeria crandallis, Eimeria christenseni and Eimeria ninakohlyakimovae.

**ACTIVE DRUG**

MONENSIN .....20G/TON

**GUARANTEED ANALYSIS**

CRUDE PROTEIN	MIN	15.0%		
(This product contains not more than .8% equivalent crude protein from non-protein nitrogen)				
CRUDE FAT	MIN	4.25%		
CRUDE FIBER			MAX	16.0%
ACID DETERGENT FIBER			MAX	18.0%
CALCIUM	MIN	1.10%	MAX	1.60%
PHOSPHORUS	MIN	0.35%		
SALT	MIN	0.80%	MAX	1.30%
COPPER (CU)	MIN	10 PPM	MAX	30 PPM
SELENIUM	MIN	0.300 PPM		
VITAMIN A	MIN	16,000 IU/lb		
VITAMIN D	MIN	2,500 IU/lb.		
VITAMIN E	MIN	50 IU/lb		

**INGREDIENTS**

ROLLED CORN, SOYBEAN HULLS, SUNCURED ALFALFA MEAL, SOYBEAN MEAL, WHEAT MIDDS, CANOLA MEAL, STABILIZED RICE BRAN, LINSEED MEAL, MOLASSES PRODUCTS, CALCIUM CARBONATE, ANIMAL & VEGETABLE FAT, SALT, YEAST CULTURE (SACCHAROMYCES CEREVISIAE YEAST), AMMONIUM CHLORIDE, THIAMINE, WHEAT BRAN, DRIED ASPERGILLUS ORYZAE FERMENTATION PRODUCTS, ZINC METHIONINE COMPLEX, ZINC AMINO ACID COMPLEX, MANGANESE AMINO ACID COMPLEX, COPPER AMINO ACID COMPLEX, COBALT GLUCOHEPTONATE, VITAMIN E SUPPLEMENT, MAGNESIUM OXIDE, VITAMIN A SUPPLEMENT, VITAMIN D3 SUPPLEMENT, COPPER SULFATE, COBALT CARBONATE, MANGANESE SULFATE, ZINC SULFATE, ETHYLENEDIAMINE DIHYDRIODIDE, FERROUS SULFATE, SODIUM SELENITE.

**FEEDING DIRECTIONS:**

- Feed Excalibur Goat continuously at a rate of 3% to 4% of body weight to all classes of goats for added bloom and to stimulate growth rate.
- Feed Excalibur Goat continuously at a rate of 1% to 2% of body weight to mature bucks and does to maintain bloom and freshness of muscle expression.

**CAUTION:** Do not allow horses or other equines access to formulations containing Monensin. Ingestion of Monensin by equines has been fatal. Feeding undiluted or mixing errors resulting in high concentrations of Monensin has been fatal in cattle and could be fatal in goats. Consumption by unapproved species may result in toxic reaction. Do not feed to lactating goats.

**WARNING:** DO NOT FEED TO SHEEP THIS PRODUCT CONTAINS COPPER.

MANUFACTURED BY  
LOWE'S PELLETS & GRAIN, INC.  
GREENSBURG, IN 47240  
NET WEIGHT 50 LBS. (22.68 KG) OR BULK

# Question 19



When do you typically wean a meat goat kid?

- A. 4 weeks
- B. 12 weeks

- C. 6 weeks
- D. 8 weeks



# Question 20



Which one of these goat breeds is not considered a meat breed?

- A. Oberhasli
- B. Spanish

- C. Savanna
- D. Pygmy



# Question 21



Which one of these goat breeds is not considered a dairy breed?

- A. Kiko
- B. Nigerian Dwarf
- C. Saanen
- D. Toggenburg



# Question 22

How long do you have to hold goat milk after using this dewormer?

- A. 30 days
- B. Not Required
- C. 15 days
- D. 7 days

**Prairie Pride® Goat Dewormer**  
(Medicated)

*For removal and control of mature gastrointestinal nematode infections of goats including Haemonchus contortus, Ostertagia (Teladorsagia) circumcincta and Trichostrongylus axei*

- Pelleted dewormer supplement for goats
- Breaks the life cycle of 3 major gastrointestinal worms
- Can be used with pregnant and lactating does


**ACTIVE INGREDIENTS:**  
Morantel Tartrate: 1760 g/ton

**INACTIVE INGREDIENTS:**  
Wheat middlings, soybean hulls (max 20%), calcium carbonate, molasses products, propionic acid (a preservative)

**GUARANTEED ANALYSIS:**

Crude Protein (min).....	12%
Crude Fat (min).....	1%
Crude Fiber (max).....	20%
Moisture (max).....	10%
Calcium (min).....	2.8%
Calcium (max).....	3.3%

Manufactured By  
Ridley Speciality Products  
111 W. Cherry St., Suite 500  
Mankato, MN 56001



**AX# 36291**

**DIRECTIONS FOR USE:**

- Feed as a single therapeutic treatment at 0.44 grams of morantel tartrate per 100 pounds of body weight.
- Fresh water should be available at all times.
- After medicated feed is consumed, resume normal feeding.
- Conditions of constant worm exposure may require retreatment in 2 to 4 weeks.
- When used as a top dress the medication as well as the underlying feed should be evenly distributed.

**TOP DRESS DIRECTIONS:**

Body Weight (Pound)	Ounces of GW
12.5	1 oz
25	2 oz
50	4 oz
75	6 oz
100	8 oz
150	12 oz
200	16 oz

4 oz. MEASURING SCOOP ENCLOSED.  
1 Level Scoop per 50 lb. Body Weight

**CAUTION:** Consult your veterinarian before using in severely debilitated animals and for assistance in the diagnosis, treatment and control of parasitism. Do not mix in feeds containing Bentonite.

**WARNING:** Do not treat goats within 30 days of slaughter. No milk discard required following use in dairy goats. For use in goats only.

# Question 23



What is the average daily weight gain for a meat breed goat?

- A. .2-.4 pounds per day
- B. .35-.6 pounds per day

- C. .6-.8 pounds per day
- D. 1-1.2 pounds per day



# Question 24



What percentage of its body weight can a pack goat carry?

- A. 15%-20%
- B. 10%-15%

- C. 25%-30%
- D. 35%-40%





# Question 25



What percentage of its body weight can a draft/harness goat pull?

- A. 150%
- B. 100%

- C. 200%
- D. 75%



# Question 26



What amount of protein should you feed a growing goat?

- A. 10%-12%
- B. 20%-24%

- C. 12%-16%
- D. 18%-20%



# Question 27



Which one of these goat breeds on average produces milk with the highest percentage of milk fat?

- A. Nubian
- B. Nigerian Dwarf
- C. Saanen
- D. Toggenburg



# Question 28



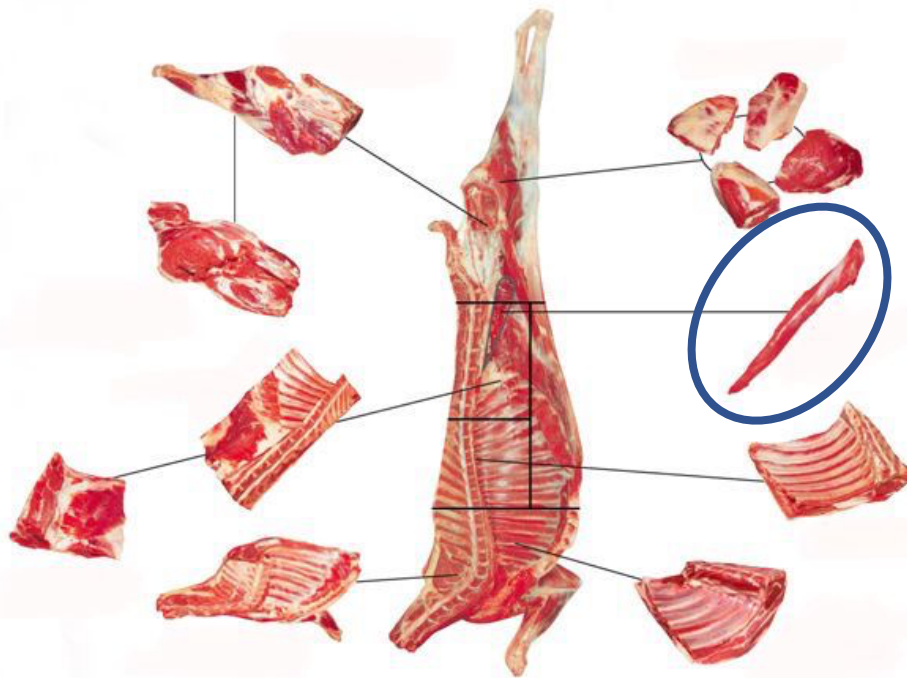
Which one of these goat breeds on average produces milk with the highest percentage of milk proteins?

- A. Nubian
- B. Alpine

- C. Saanen
- D. Nigerian Dwarf



# Question 29



What cut of meat is circled in blue?

A. Rib

B. Tender Loin

C. Loin

D. Rack



# Question 30

What does the CDT vaccination help prevent in goats?



- A. Coccidiosis & Tuberculosis
- B. Caprine Arthritis Encephalitis & Tetanus
- C. Caseous Lymphadenitis & Tuberculosis
- D. Overeating disease & Tetanus



## Goat Study Guide Answer Key

- |       |       |
|-------|-------|
| 1. D  | 16. A |
| 2. C  | 17. C |
| 3. D  | 18. D |
| 4. B  | 19. D |
| 5. C  | 20. A |
| 6. B  | 21. A |
| 7. B  | 22. B |
| 8. A  | 23. B |
| 9. B  | 24. C |
| 10. B | 25. A |
| 11. C | 26. C |
| 12. A | 27. B |
| 13. C | 28. D |
| 14. D | 29. B |
| 15. C | 30. D |

